


NOT	ÄNDRING	INFÖRD	SIGN	Table of Contents		SECONDARY SUBSTATION	Attachment 14																		
						SWITCHGEAR																			
						Example schematics MV Type 1, LV Type 4-5																			
					<table border="1"> <tr> <td>KONSTR.</td> <td>KJS</td> <td>RIT.</td> <td>KJS</td> </tr> <tr> <td>KOLL.</td> <td>HRo</td> <td>GODK.</td> <td></td> </tr> <tr> <td>SKALA</td> <td></td> <td>DAT.</td> <td>2023-10-23</td> </tr> </table>	KONSTR.	KJS	RIT.	KJS	KOLL.	HRo	GODK.		SKALA		DAT.	2023-10-23		<table border="1"> <tr> <td>ERS.</td> <td></td> </tr> <tr> <td>BLAD</td> <td>0</td> </tr> <tr> <td>FORTS.BLAD</td> <td>1</td> </tr> </table>	ERS.		BLAD	0	FORTS.BLAD	1
KONSTR.	KJS	RIT.	KJS																						
KOLL.	HRo	GODK.																							
SKALA		DAT.	2023-10-23																						
ERS.																									
BLAD	0																								
FORTS.BLAD	1																								

SCHEMATIC		MV SWITCHGEAR	
Table of contents	sh.0	MV Cable bay 1	sh.11
Single-line diagram	sh.1	MV Cable bay 2	sh.12
LV SWITCHGEAR		MV Switch over bay 1	sh.13
LV Breaker T11	sh.2	MV Transformer bay 1	sh.14
LV Breaker T12	sh.3	MV Transformer bay 2	sh.15
Cooling equipment T11	sh.4	MV Switch over bay 2	sh.16
Cooling equipment T12	sh.5	MV Cable bay 3	sh.17
LV Group central	sh.6	MV Cable bay 4	sh.18
RTU LV Measurements	sh.7	RTU MV Power distribution	sh.19
RTU LV DI	sh.8	RTU MV Measurements	sh.20
RTU LV DO	sh.9	RTU MV Measurements	sh.21
		RTU MV DI	sh.22
		RTU MV DI/DO	sh.23

NOT	ÄNDRING	INFÖRD	SIGN

Single-line diagram



SECONDARY SUBSTATION

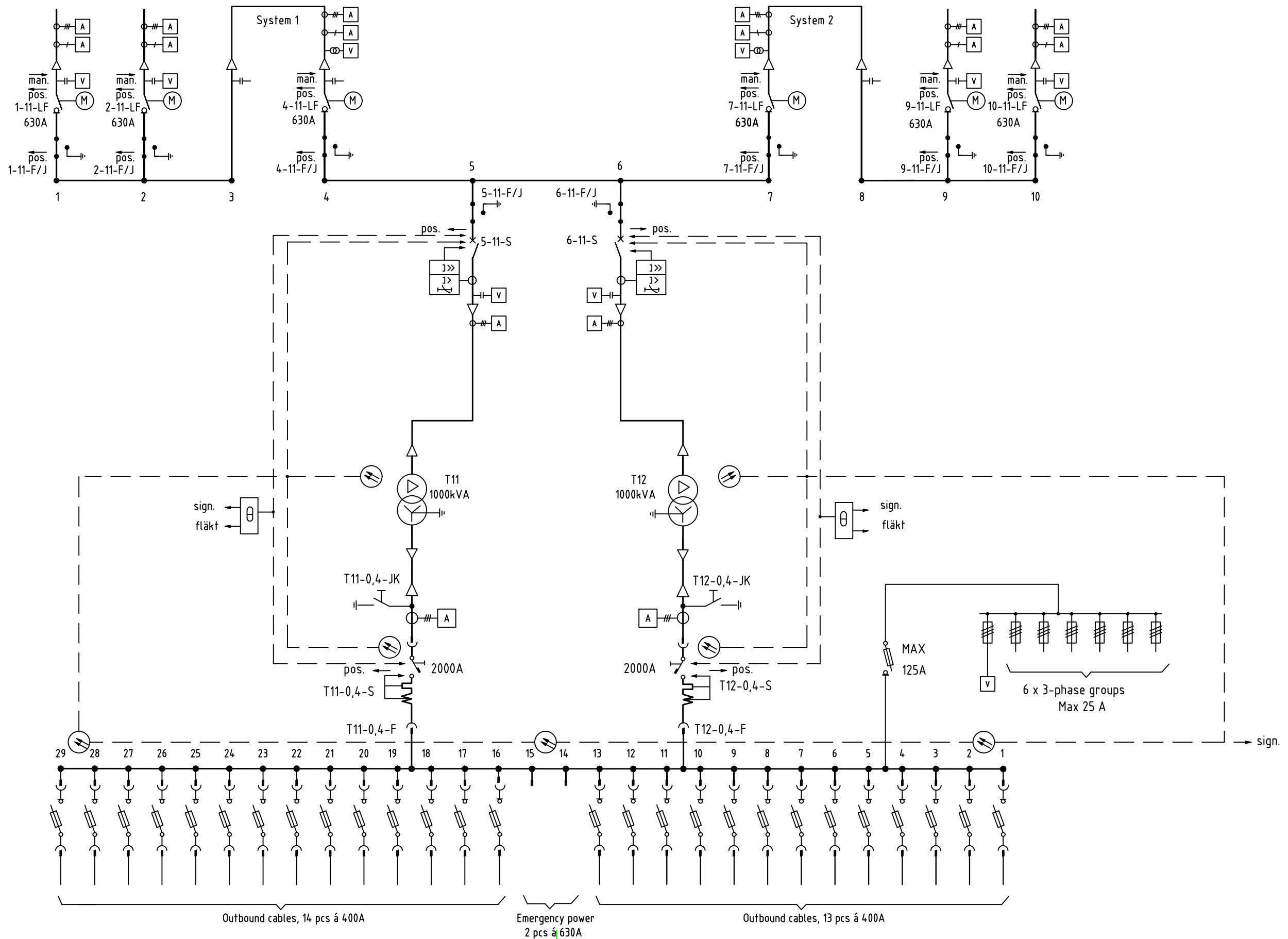
Attachment 14

KONSTR.	KJS	RIT.	KJS
KOLL.	HRo	GODK.	
SKALA		DAT.	2023-10-23

SWITCHGEAR

Example schematics MV Type 1, LV Type 4-5

ERS.	
BLAD	1
FORTS.BLAD	2



Medium Voltage Switchgear
 Un=12kV
 In=630A
 Ik 1s=20kA

Low Voltage Switchgear
 Un=430V
 In=2000A
 Ik 1s =55kA

0,5 kV

Outbound cables, 14 pcs á 400A

Emergency power
 2 pcs á 630A

Outbound cables, 13 pcs á 400A

6 x 3-phase groups
 Max 25 A

NOT	ÄNDRING	INFÖRD	SIGN

LV Breaker T11



SECONDARY SUBSTATION

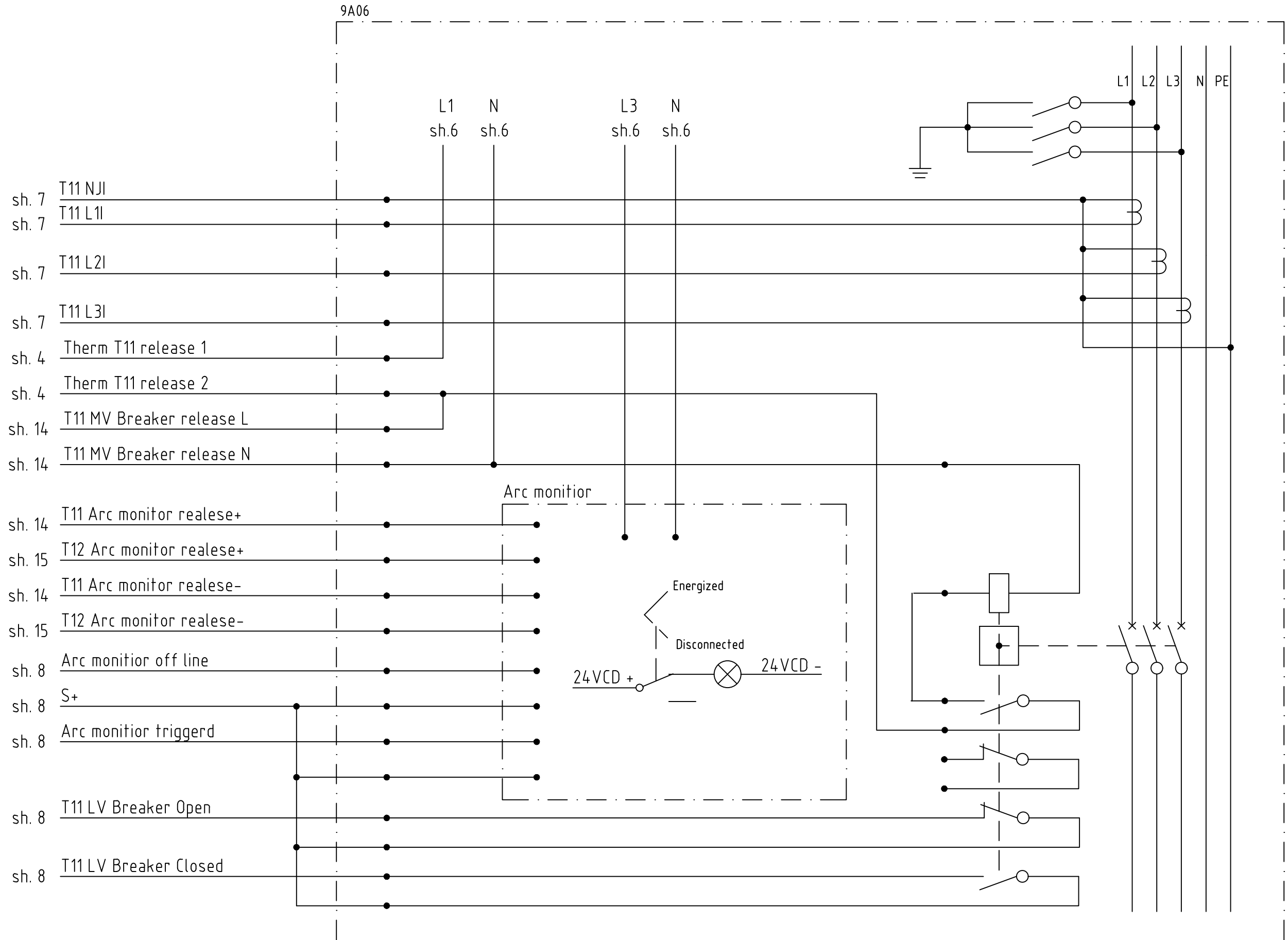
Attachment 14

SWITCHGEAR

KONSTR.	KJS	RIT.	KJS
KOLL.	HRo	GODK.	
SKALA		DAT.	2023-10-23

Example schematics MV Type 1, LV Type 4-5

ERS.	
BLAD	2
FORTS.BLAD	3



NOT	ÄNDRING	INFÖRD	SIGN

LV Breaker T12



SECONDARY SUBSTATION

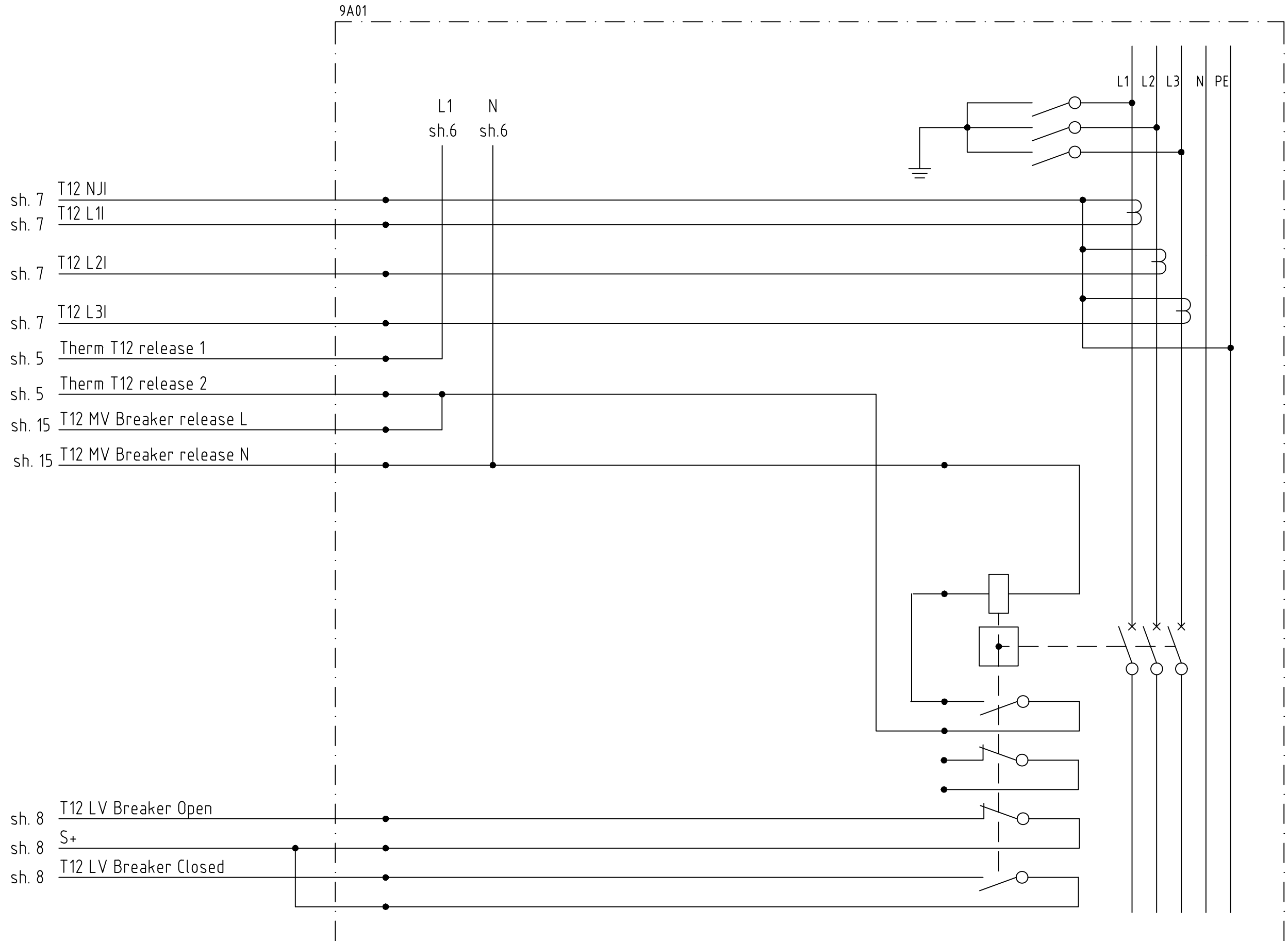
Attachment 14

SWITCHGEAR

KONSTR.	KJS	RIT.	KJS
KOLL.	HRo	GODK.	
SKALA		DAT.	2023-10-23

Example schematics MV Type 1, LV Type 4-5

ERS.	
BLAD	3
FORTS.BLAD	4



NOT	ÄNDRING	INFÖRD	SIGN

Cooling equipment T11



SECONDARY SUBSTATION

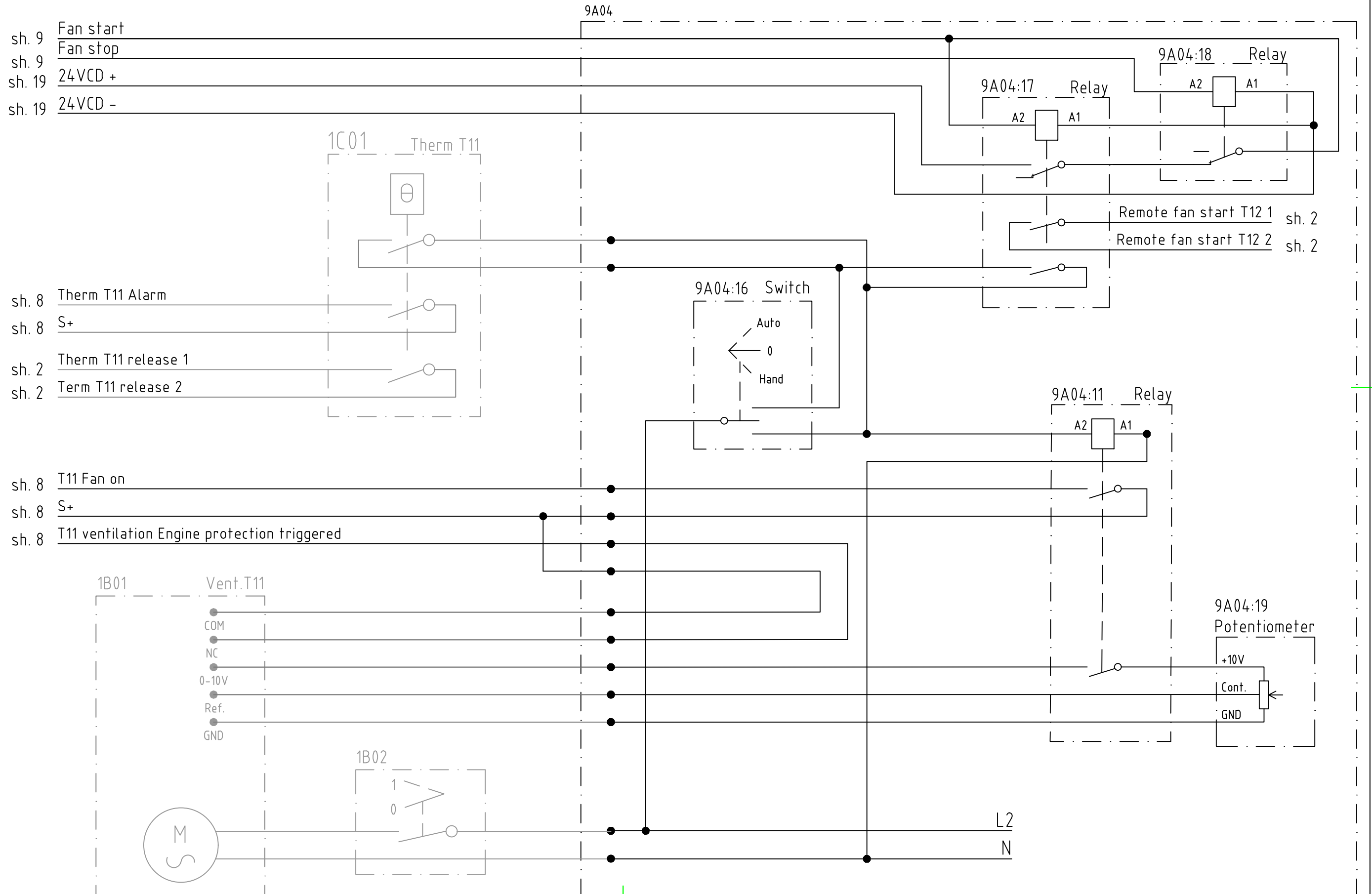
Attachment 14

SWITCHGEAR

KONSTR.	KJS	RIT.	KJS
KOLL.	HRo	GODK.	
SKALA		DAT.	2023-10-23

Example schematics MV Type 1, LV Type 4-5

ERS.	
BLAD	4
FORTS.BLAD	5



NOT	ÄNDRING	INFÖRD	SIGN

Cooling equipment T12



SECONDARY SUBSTATION

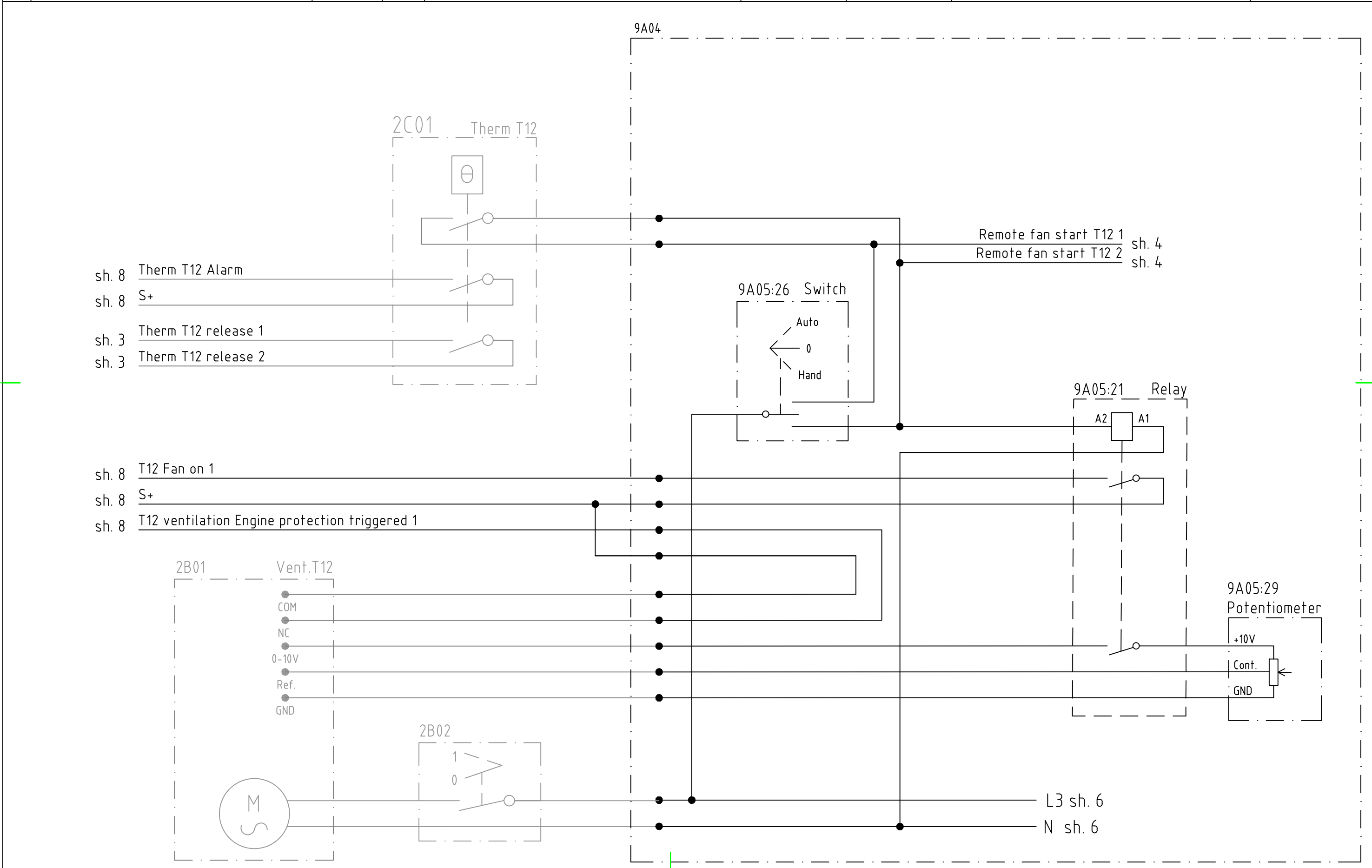
Attachment 14

SWITCHGEAR

KONSTR.	KJS	RIT.	KJS
KOLL.	HRo	GODK.	
SKALA		DAT.	2023-10-23

Example schematics MV Type 1, LV Type 4-5

ERS.	
BLAD	5
FORTS.BLAD	6



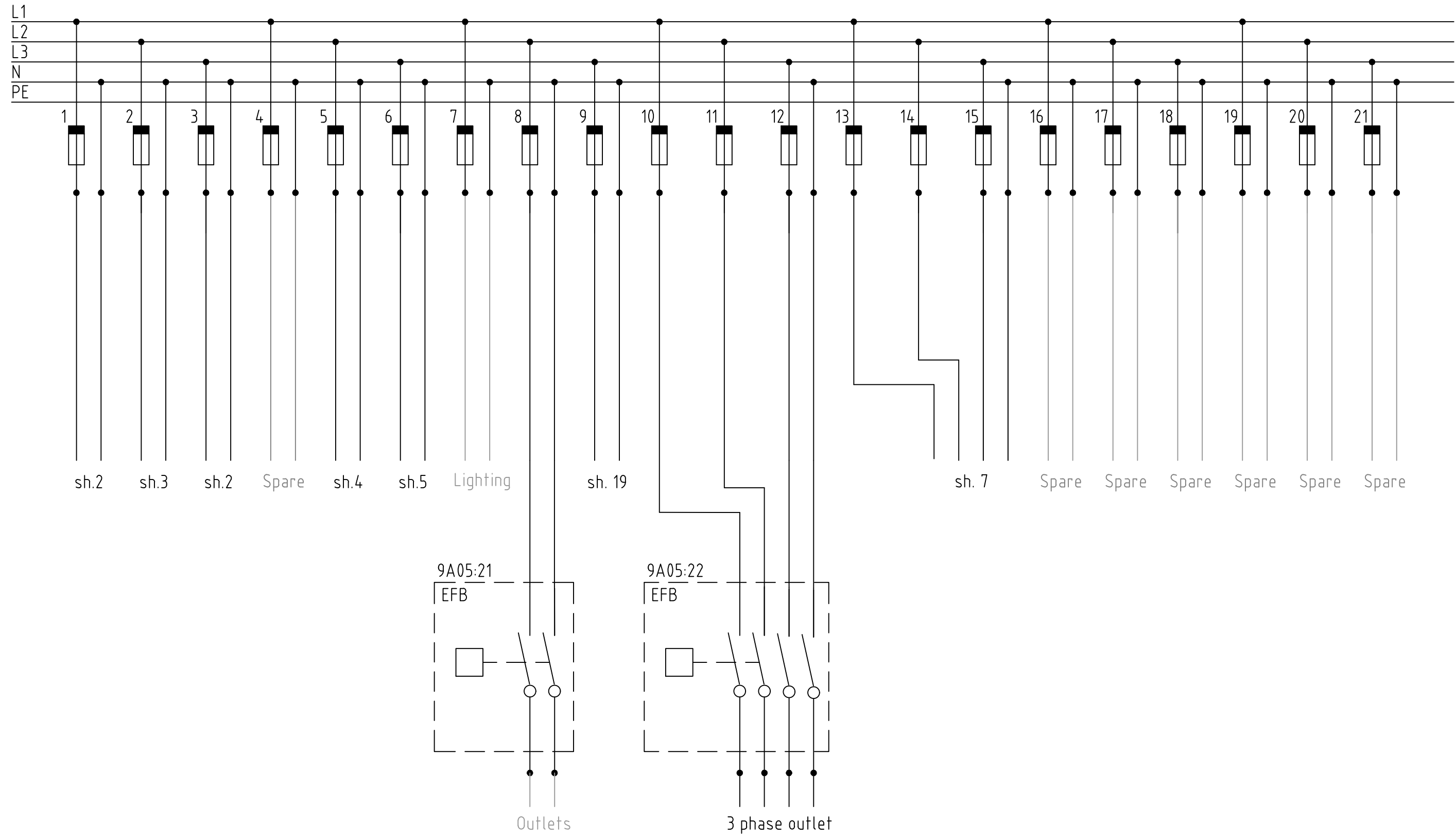
NOT	ÄNDRING	INFÖRD	SIGN

LV group central

ELLEVIO	
KONSTR. KJS	RIT. KJS
KOLL. HRo	GODK.
SKALA	DAT. 2023-10-23

SECONDARY SUBSTATION
SWITCHGEAR
Example schematics MV Type 1, LV Type 4-5

Attachment 14	
ERS.	
BLAD	6
FORTS.BLAD	7



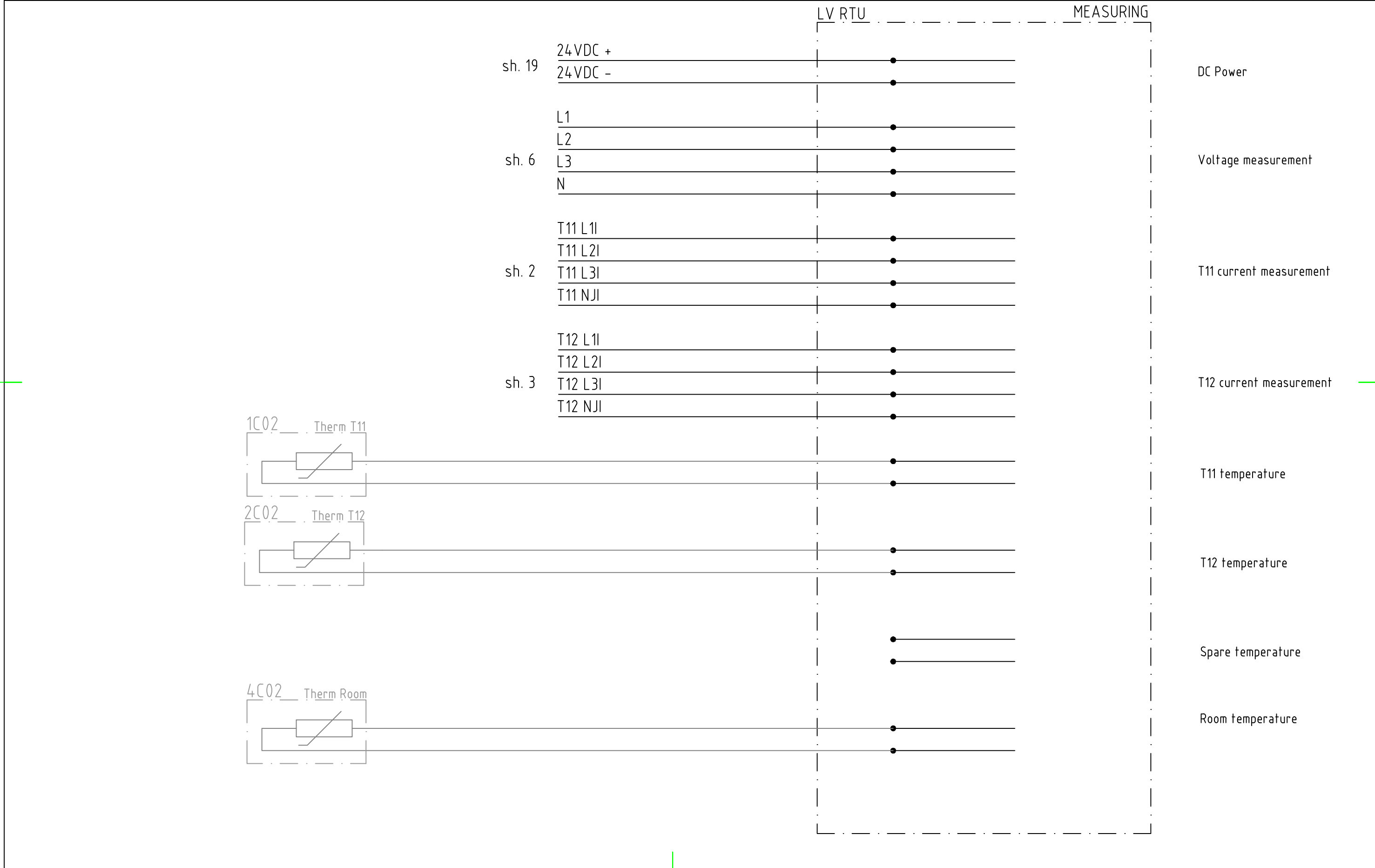
NOT	ÄNDRING	INFÖRD	SIGN

RTU LV Measurements

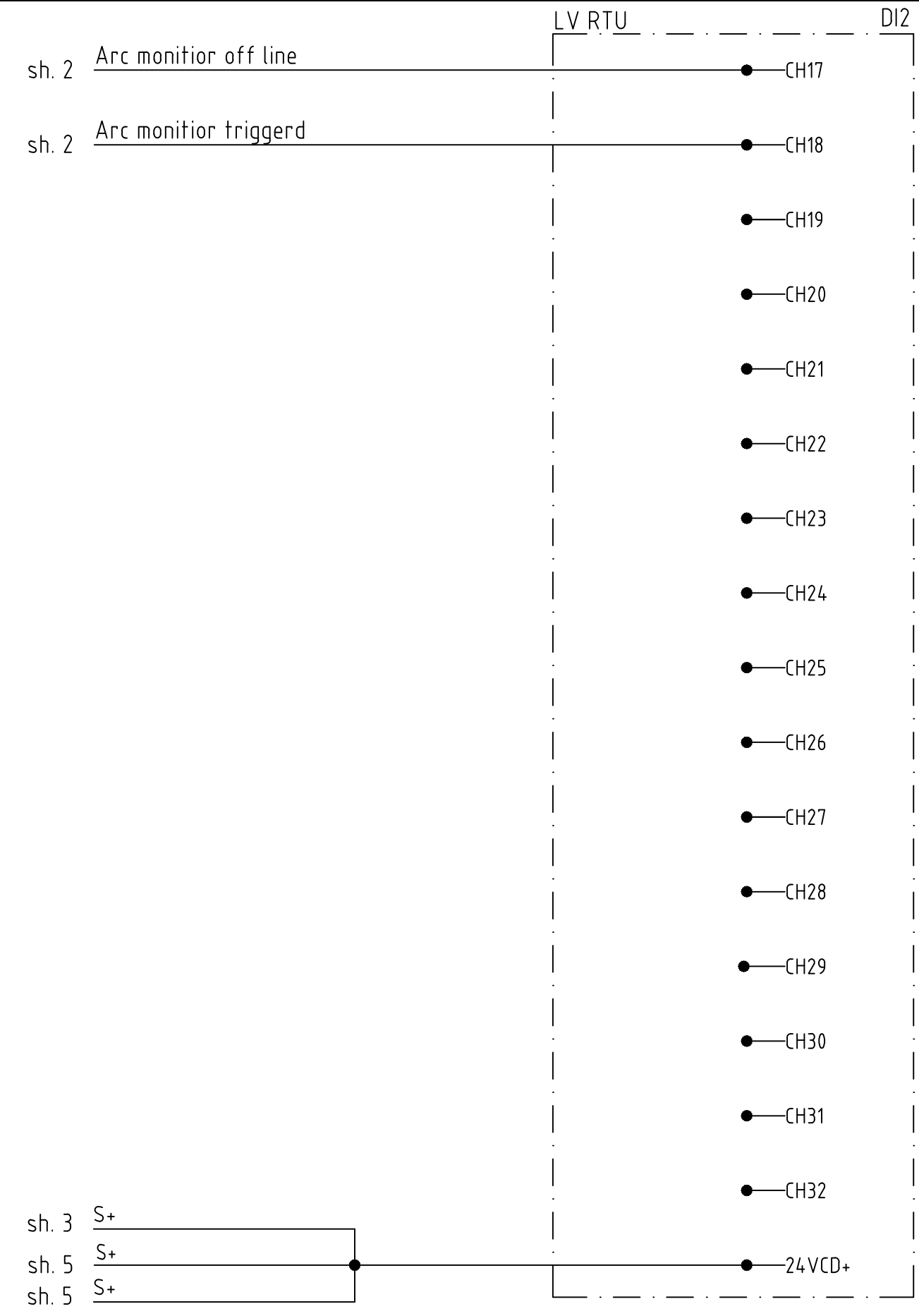
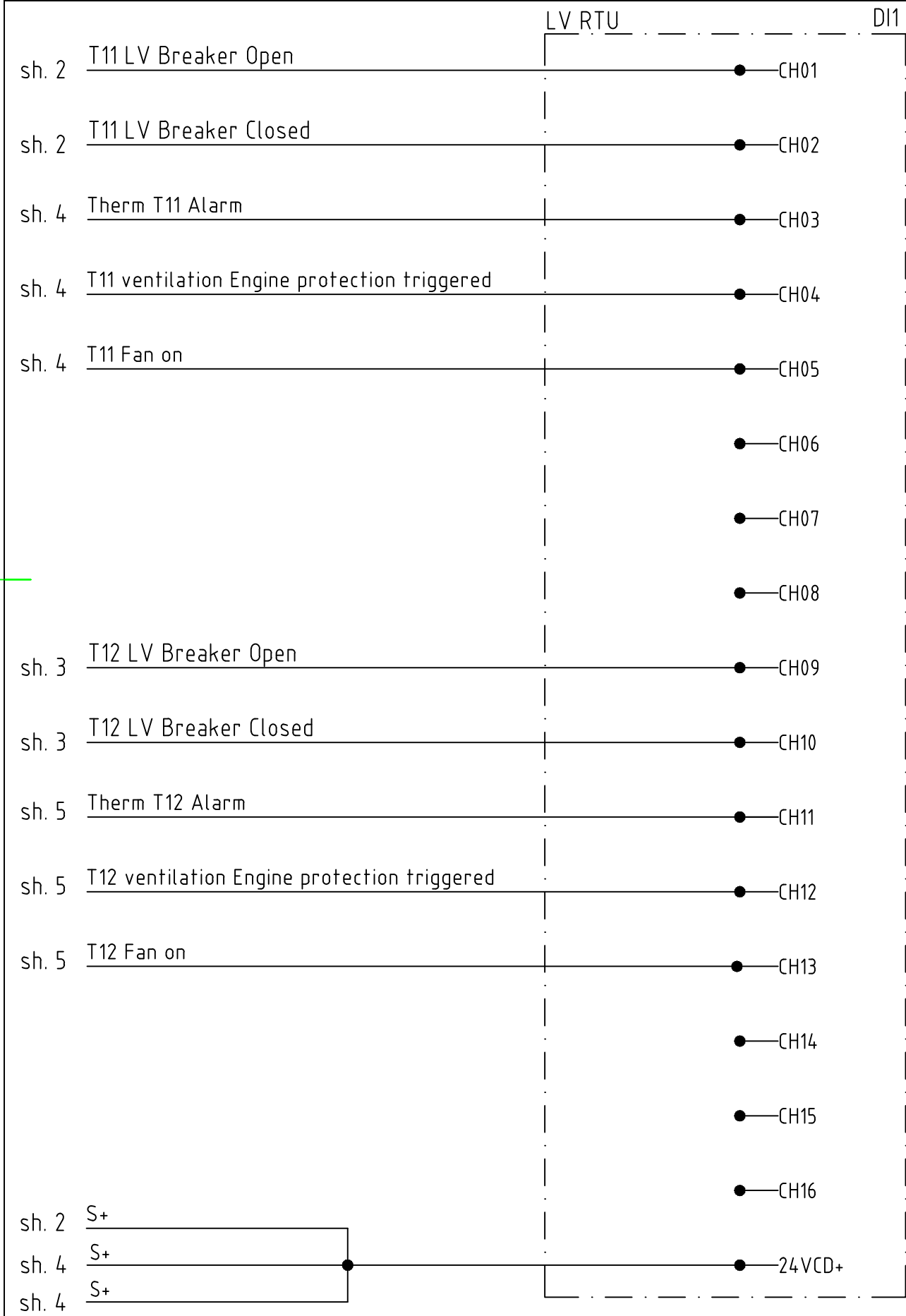
ELLEVIO			
KONSTR.	KJS	RIT.	KJS
KOLL.	HRo	GODK.	
SKALA		DAT.	2023-10-23

SECONDARY SUBSTATION
SWITCHGEAR
Example schematics MV Type 1, LV Type 4-5

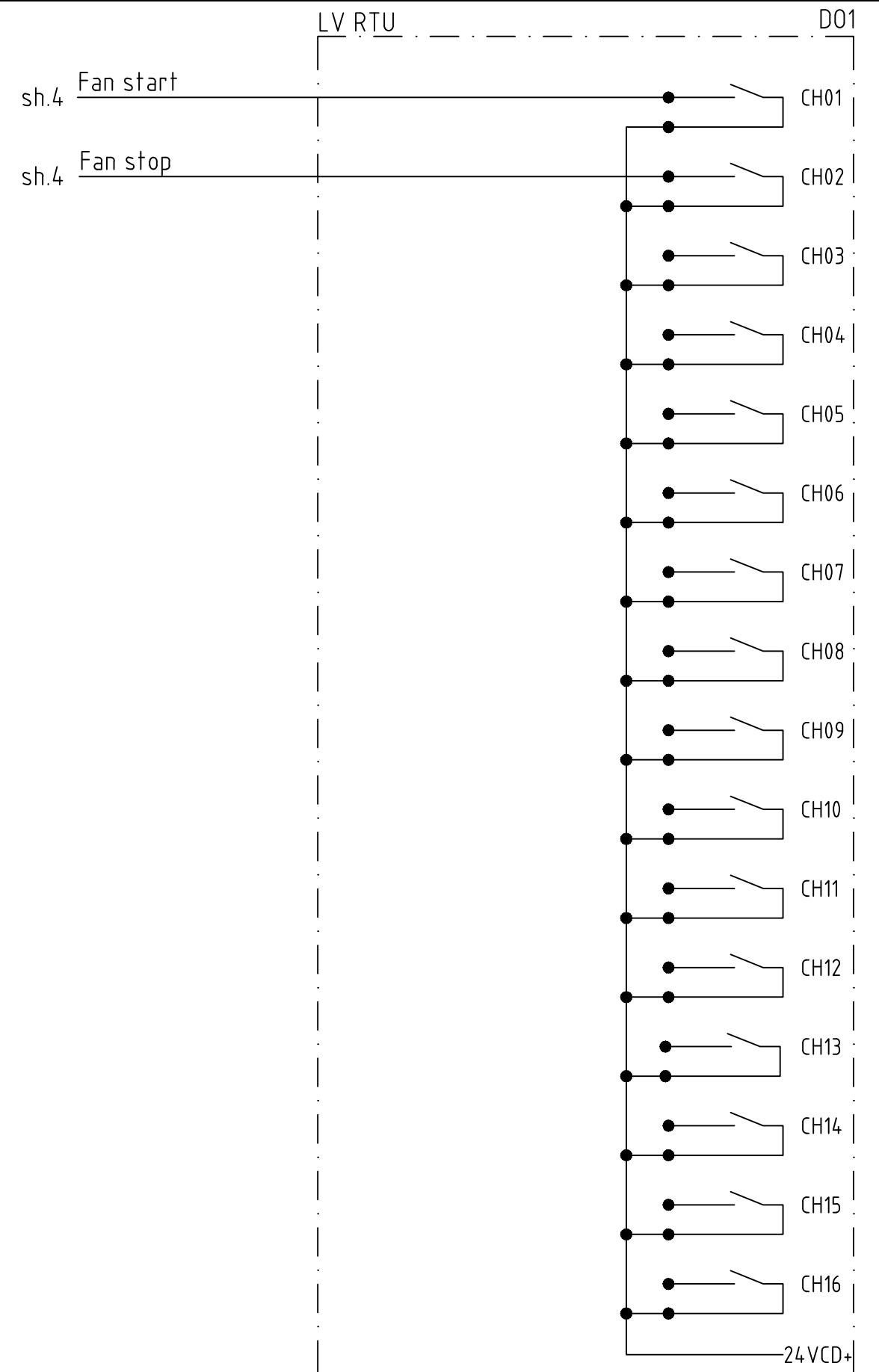
Attachment 14	
ERS.	
BLAD	7
FORTS.BLAD	8



NOT	ÄNDRING	INFÖRD	SIGN	RTU LV DI	ELLEVIO	SECONDARY SUBSTATION		Attachment 14	
						KONSTR. KJS	RIT. KJS	SWITCHGEAR	ERS.
						KOLL. HRo	GODK.	Example schematics MV Type 1, LV Type 4-5	BLAD 8
					SKALA	DAT. 2023-10-23	FORTS.BLAD 9		



NOT	ÄNDRING	INFÖRD	SIGN	RTU LV DO	ELLEVIÖ	SECONDARY SUBSTATION		Attachment 14	
						KONSTR. KJS	RIT. KJS	SWITCHGEAR	ERS.
						KOLL. HRo	GODK.	Example schematics MV Type 1, LV Type 4-5	BLAD 9
					SKALA	DAT. 2023-10-23		FORTS.BLAD 11	



NOT	ÄNDRING	INFÖRD	SIGN

MV Cable bay 1 (7A01)



SECONDARY SUBSTATION

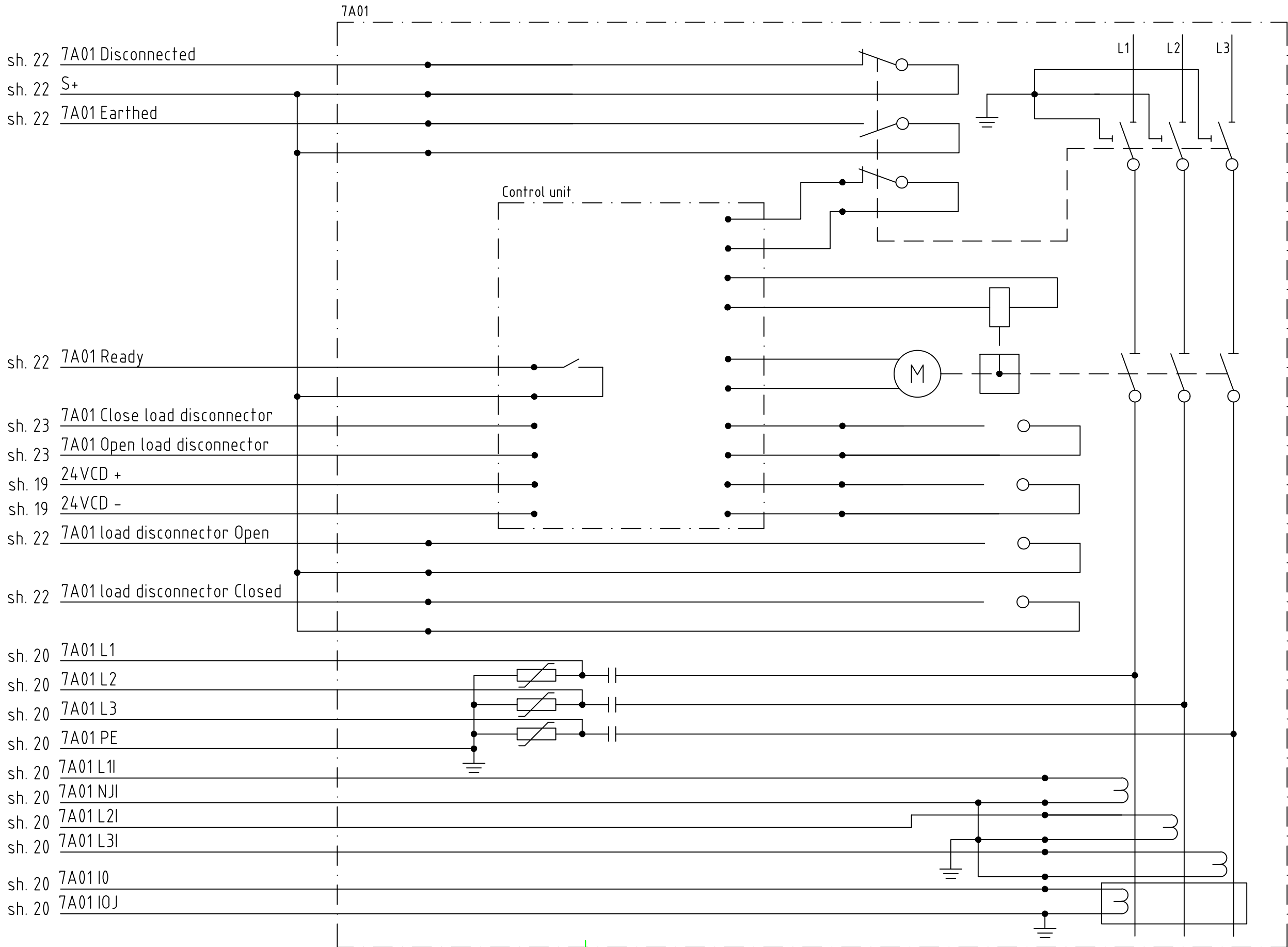
Attachment 14

SWITCHGEAR

KONSTR.	KJS	RIT.	KJS
KOLL.	HRo	GODK.	
SKALA		DAT.	2023-10-23

Example schematics MV Type 1, LV Type 4-5

ERS.	
BLAD	11
FORTS.BLAD	12



NOT	ÄNDRING	INFÖRD	SIGN

MV Cable bay 2 (7A02)



SECONDARY SUBSTATION

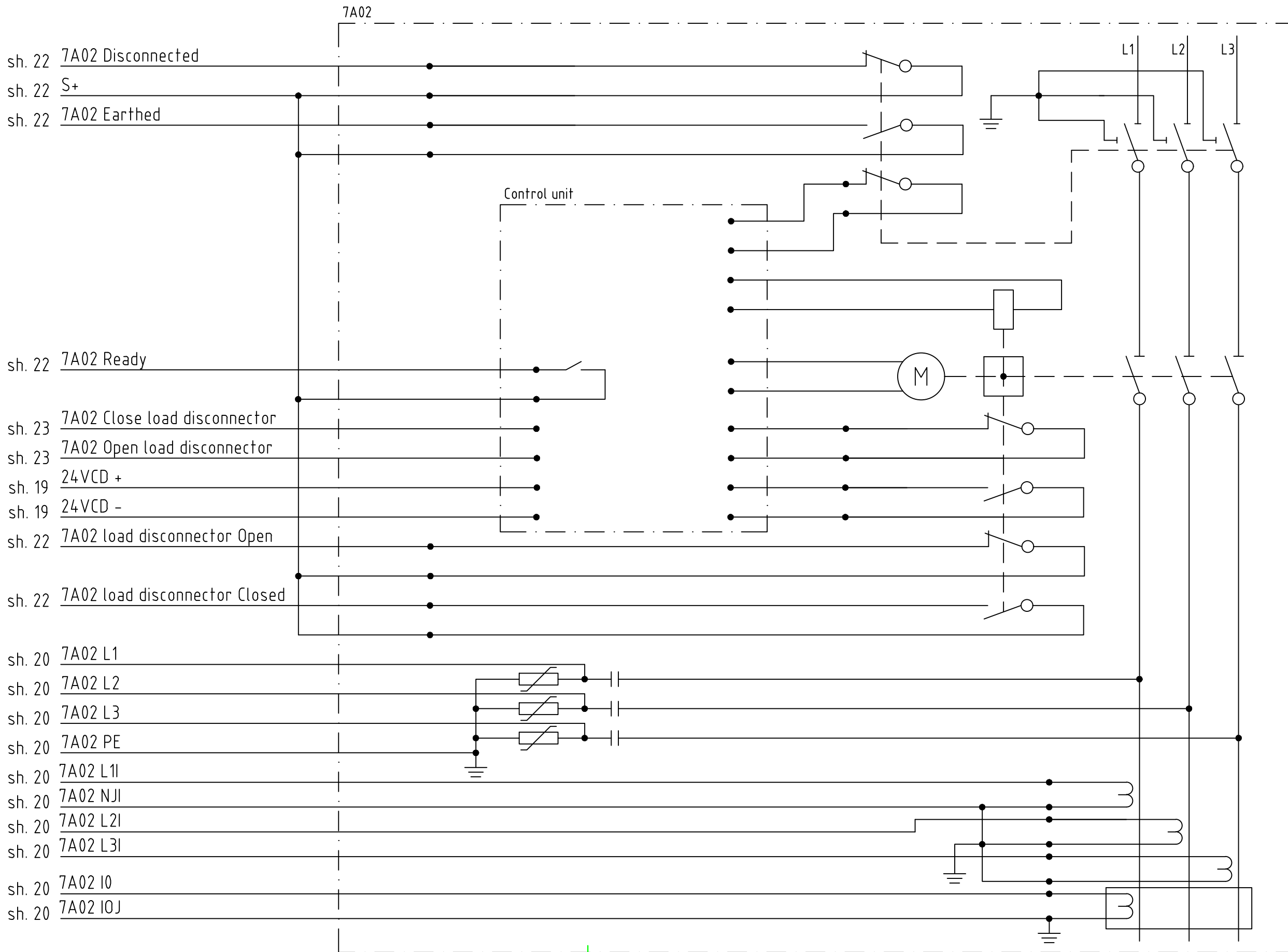
Attachment 14

SWITCHGEAR

KONSTR.	KJS	RIT.	KJS
KOLL.	HRo	GODK.	
SKALA		DAT.	2023-10-23

Example schematics MV Type 1, LV Type 4-5

ERS.	
BLAD	12
FORTS.BLAD	13



NOT	ÄNDRING	INFÖRD	SIGN

MV Switch over bay 1 (7A04)



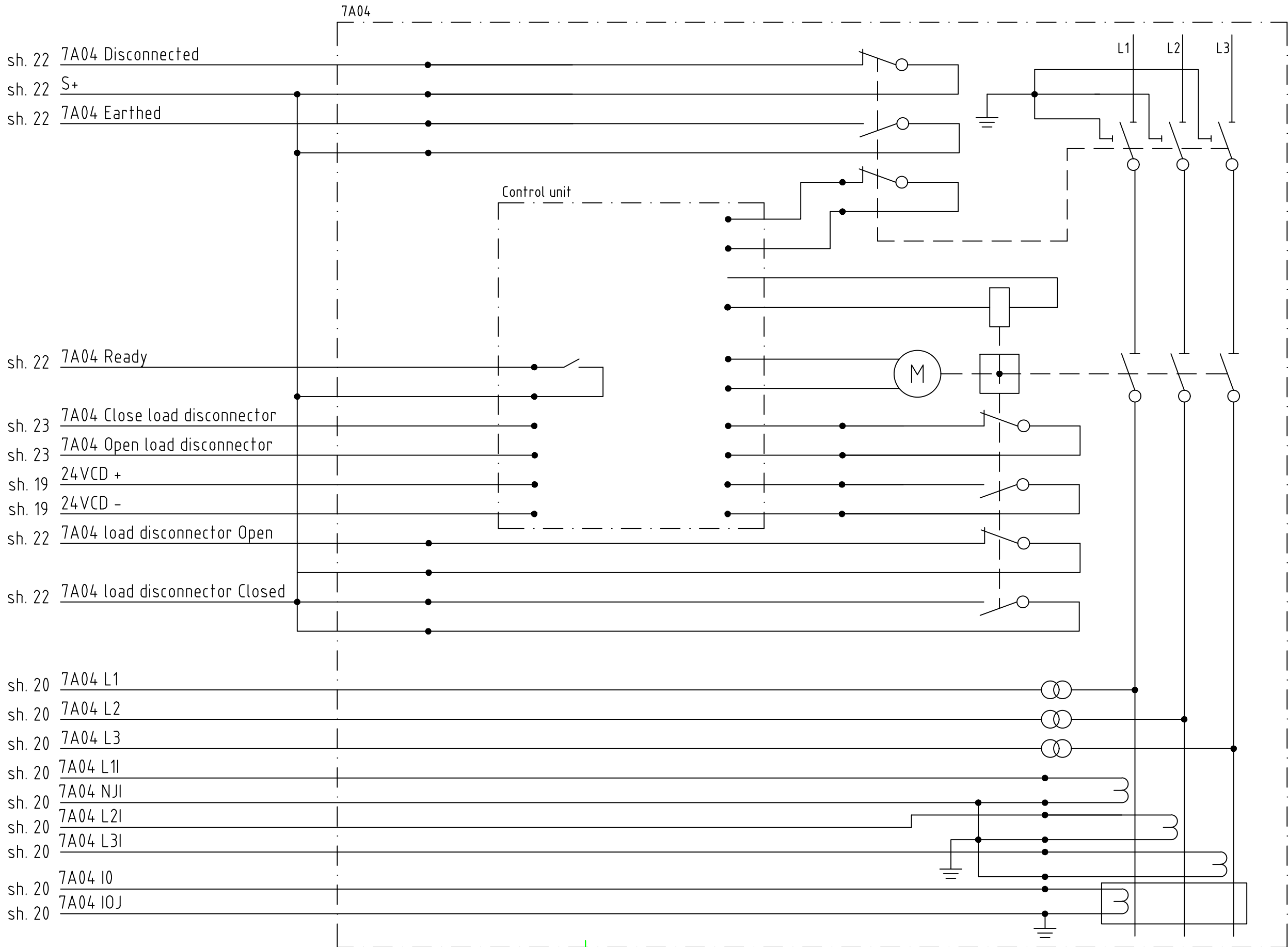
SECONDARY SUBSTATION

SWITCHGEAR

Example schematics MV Type 1, LV Type 4-5

KONSTR.	KJS	RIT.	KJS
KOLL.	HRo	GODK.	
SKALA		DAT.	2023-10-23

ERS.	
BLAD	13
FORTS.BLAD	14



NOT	ÄNDRING	INFÖRD	SIGN

MV Transformer bay 1 (7A05)



SECONDARY SUBSTATION

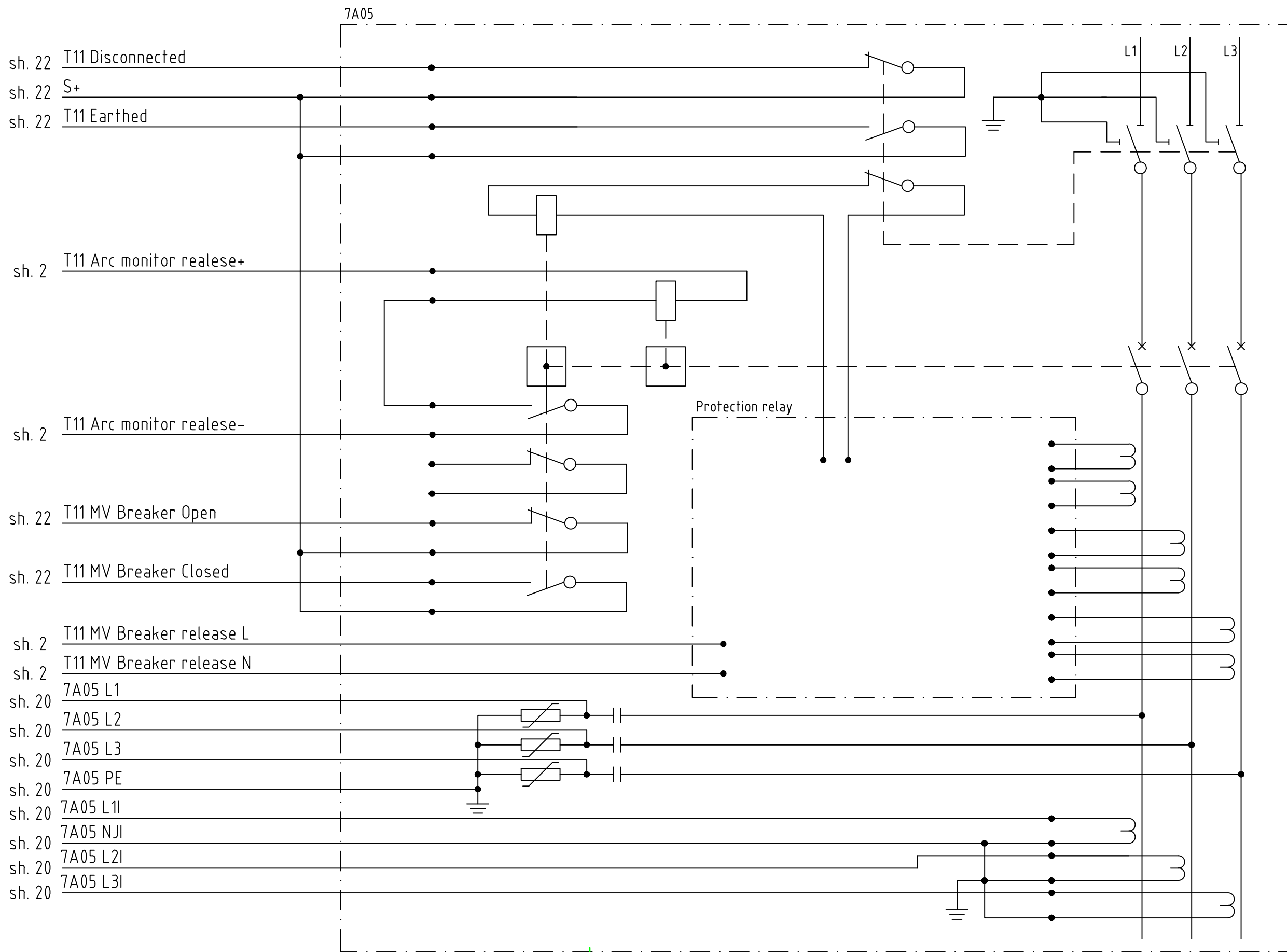
Attachment 14

SWITCHGEAR

KONSTR.	KJS	RIT.	KJS
KOLL.	HRo	GODK.	
SKALA		DAT.	2023-10-23

Example schematics MV Type 1, LV Type 4-5

ERS.	
BLAD	14
FORTS.BLAD	15



NOT	ÄNDRING	INFÖRD	SIGN

MV Transformer bay 2 (7A06)



SECONDARY SUBSTATION

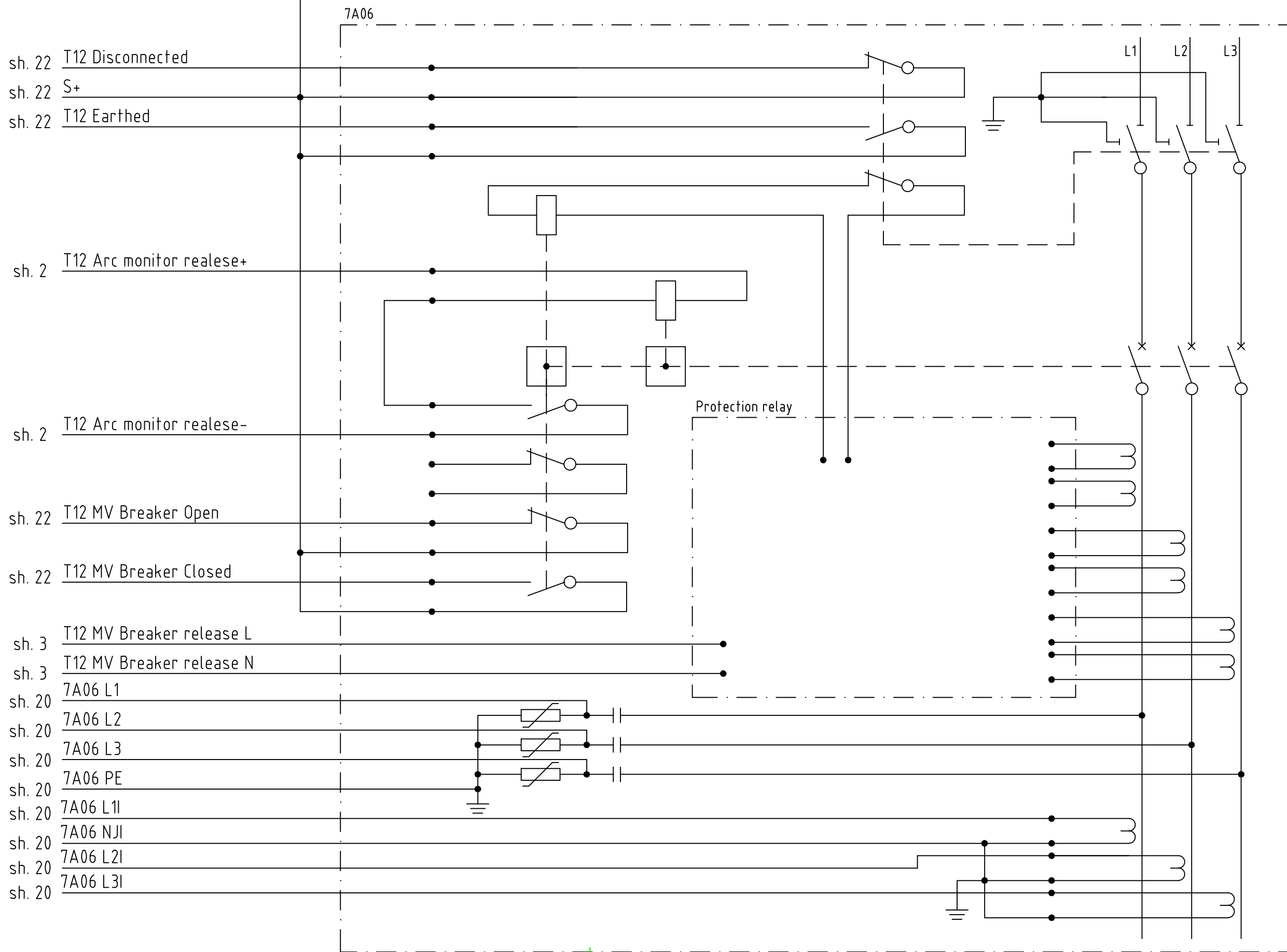
Attachment 14

SWITCHGEAR

KONSTR.	KJS	RIT.	KJS
KOLL.	HRo	GODK.	
SKALA		DAT.	2023-10-23

Example schematics MV Type 1, LV Type 4-5

ERS.	
BLAD	15
FORTS.BLAD	16



NOT	ÄNDRING	INFÖRD	SIGN

MV Switch over bay 2 (7A07)



SECONDARY SUBSTATION

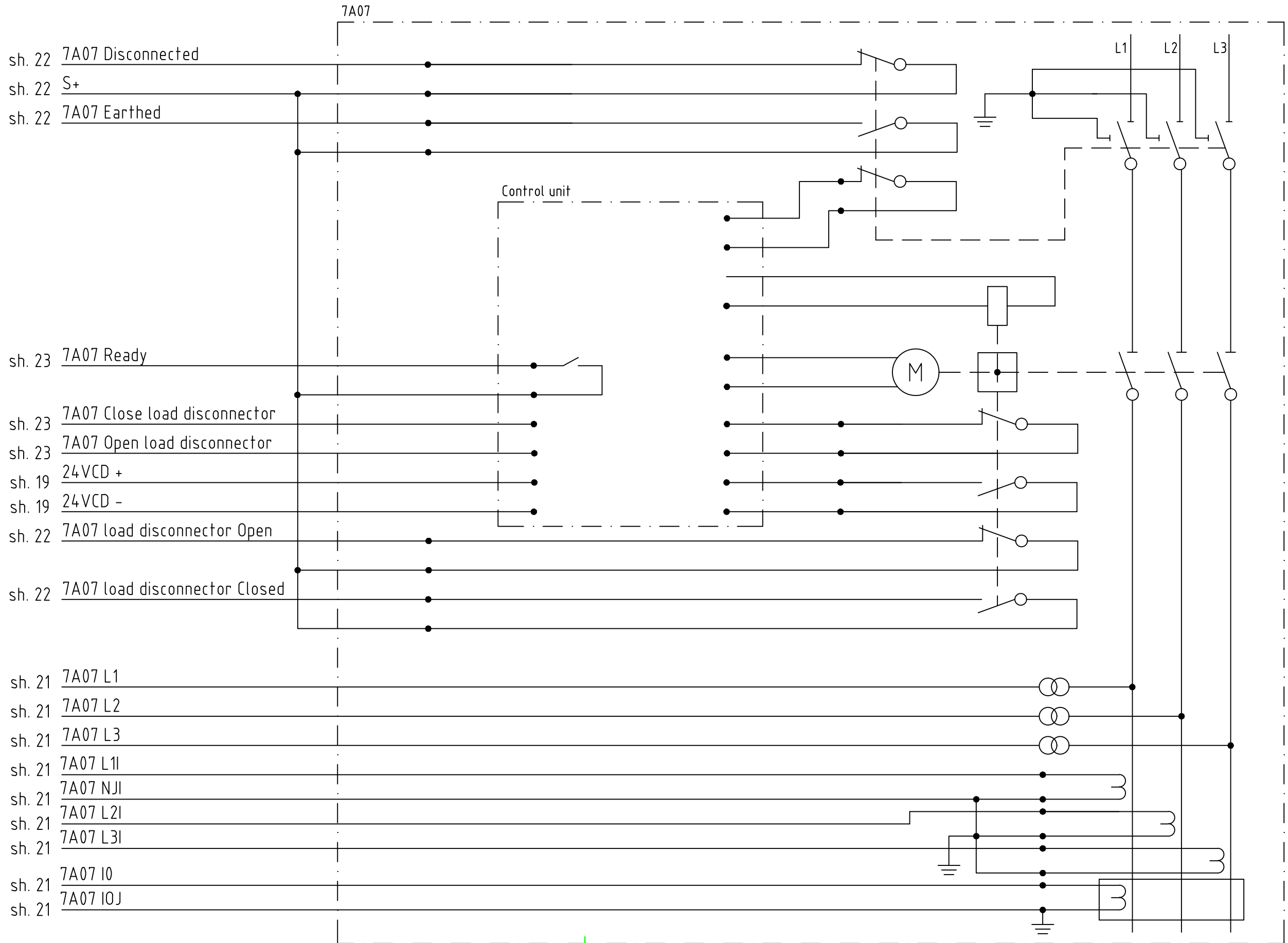
Attachment 14

SWITCHGEAR

KONSTR.	KJS	RIT.	KJS
KOLL.	HRo	GODK.	
SKALA		DAT.	2023-10-23

Example schematics MV Type 1, LV Type 4-5

ERS.	
BLAD	16
FORTS.BLAD	17



NOT	ÄNDRING	INFÖRD	SIGN

MV Cable bay 3 (7A09)



SECONDARY SUBSTATION

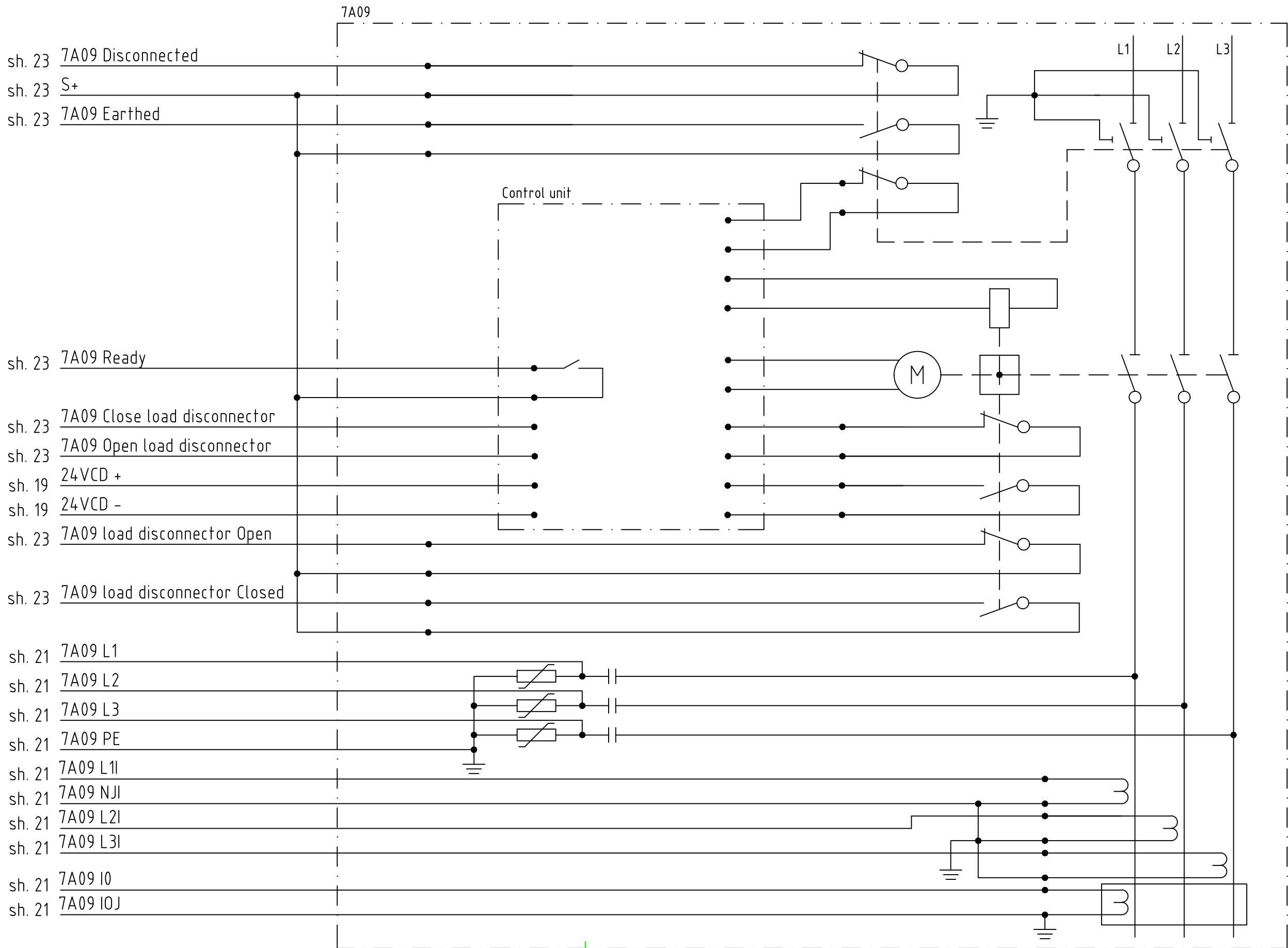
Attachment 14

SWITCHGEAR

KONSTR.	KJS	RIT.	KJS
KOLL.	HRo	GODK.	
SKALA		DAT.	2023-10-23

Example schematics MV Type 1, LV Type 4-5

ERS.	
BLAD	17
FORTS.BLAD	18



NOT	ÄNDRING	INFÖRD	SIGN

MV Cable bay 4 (7A10)



SECONDARY SUBSTATION

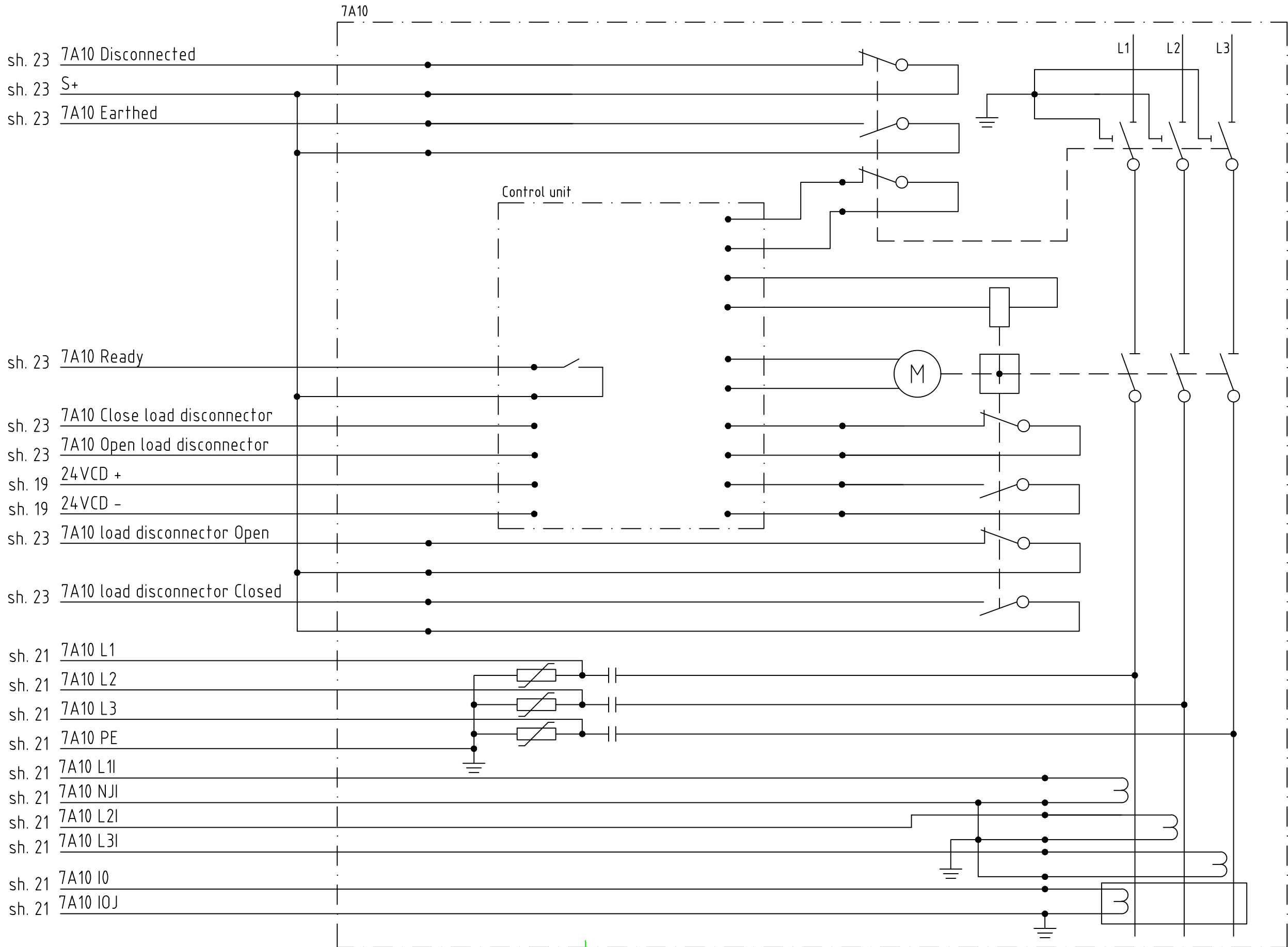
Attachment 14

SWITCHGEAR

KONSTR.	KJS	RIT.	KJS
KOLL.	HRo	GODK.	
SKALA		DAT.	2023-10-23

Example schematics MV Type 1, LV Type 4-5

ERS.	
BLAD	18
FORTS.BLAD	19



NOT	ÄNDRING	INFÖRD	SIGN

RTU MV Power Distribution



SECONDARY SUBSTATION

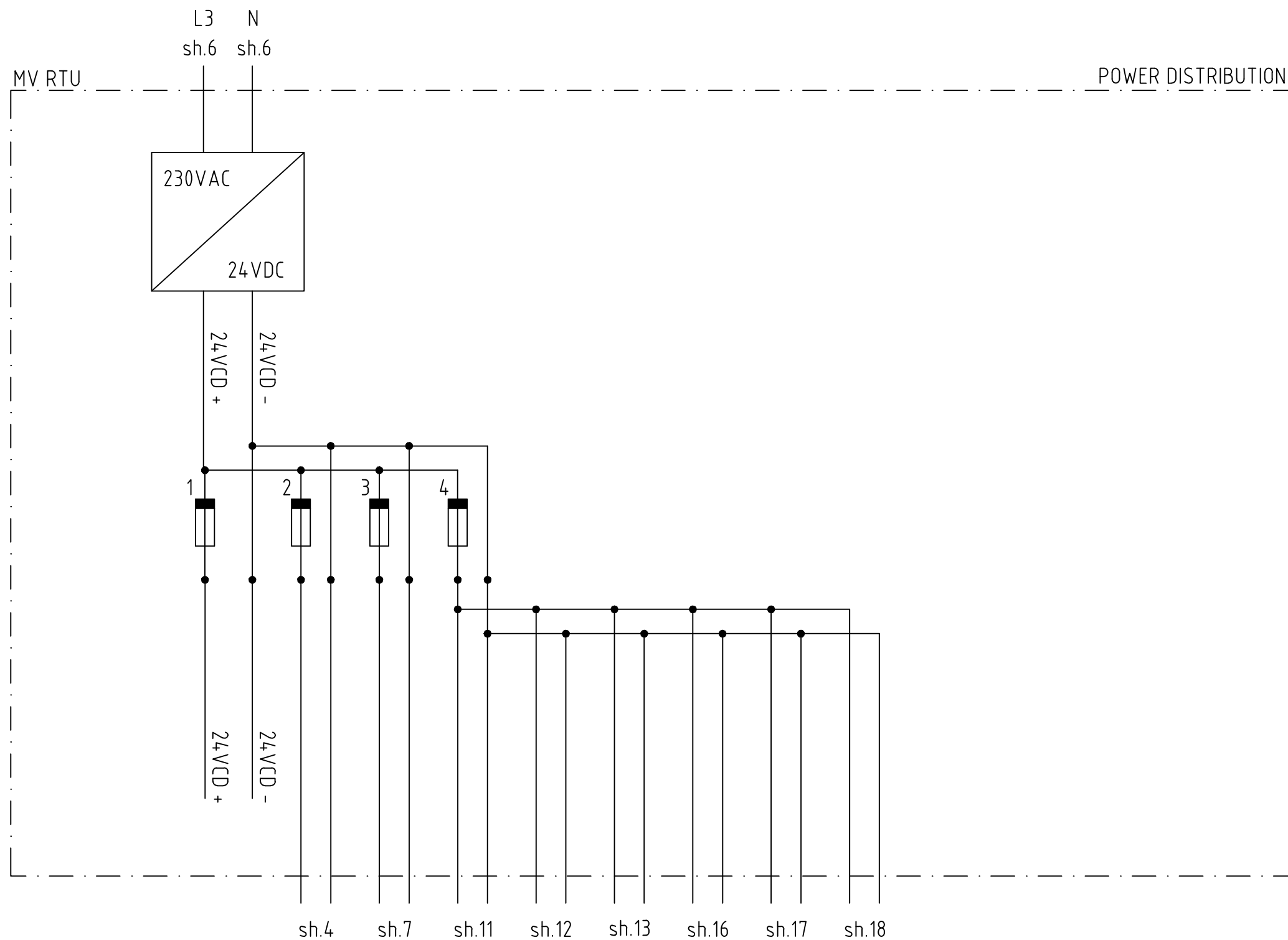
Attachment 14

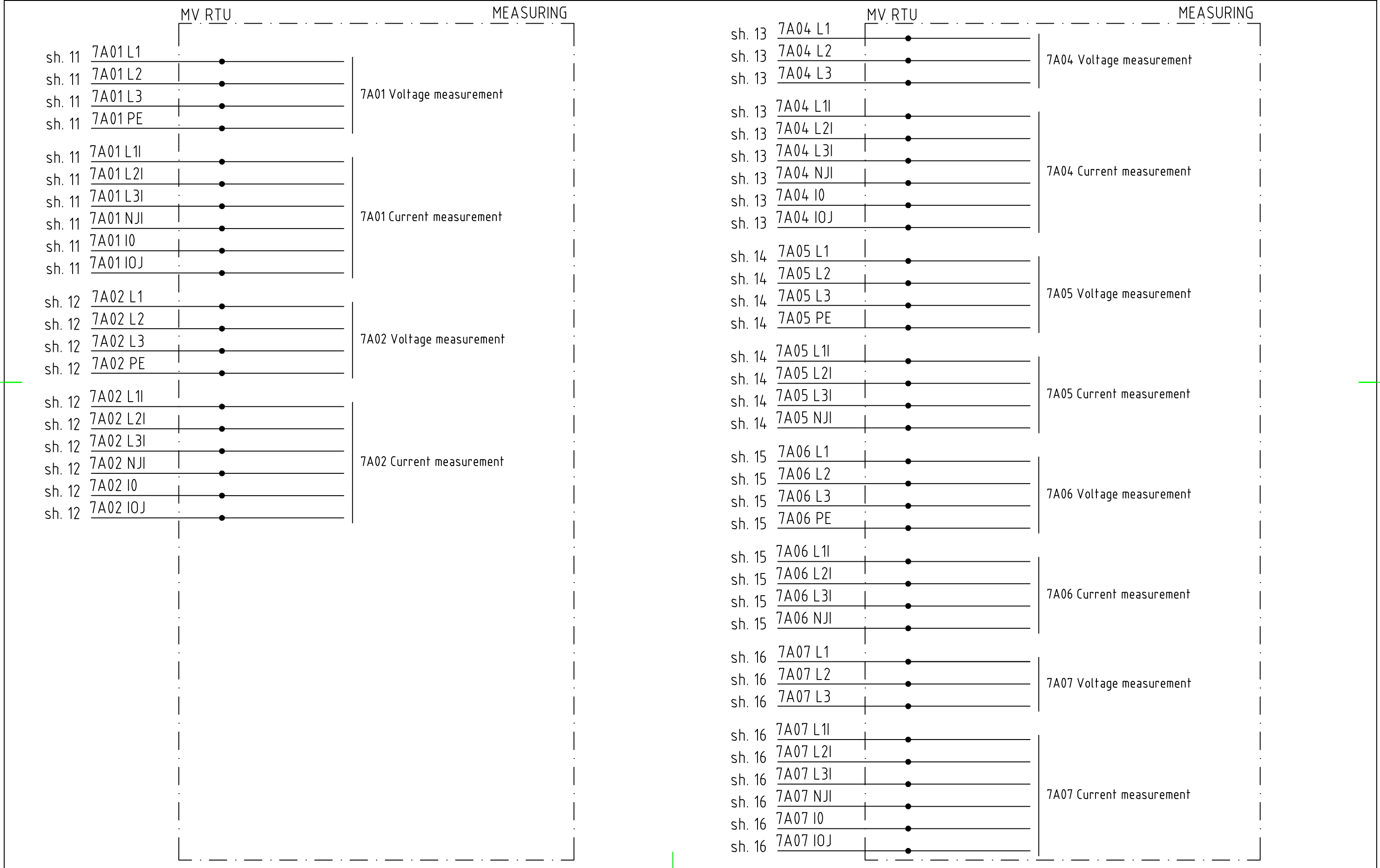
SWITCHGEAR

KONSTR.	KJS	RIT.	KJS
KOLL.	HRo	GODK.	
SKALA		DAT.	2023-10-23

Example schematics MV Type 1, LV Type 4-5

ERS.	
BLAD	19
FORTS.BLAD	20





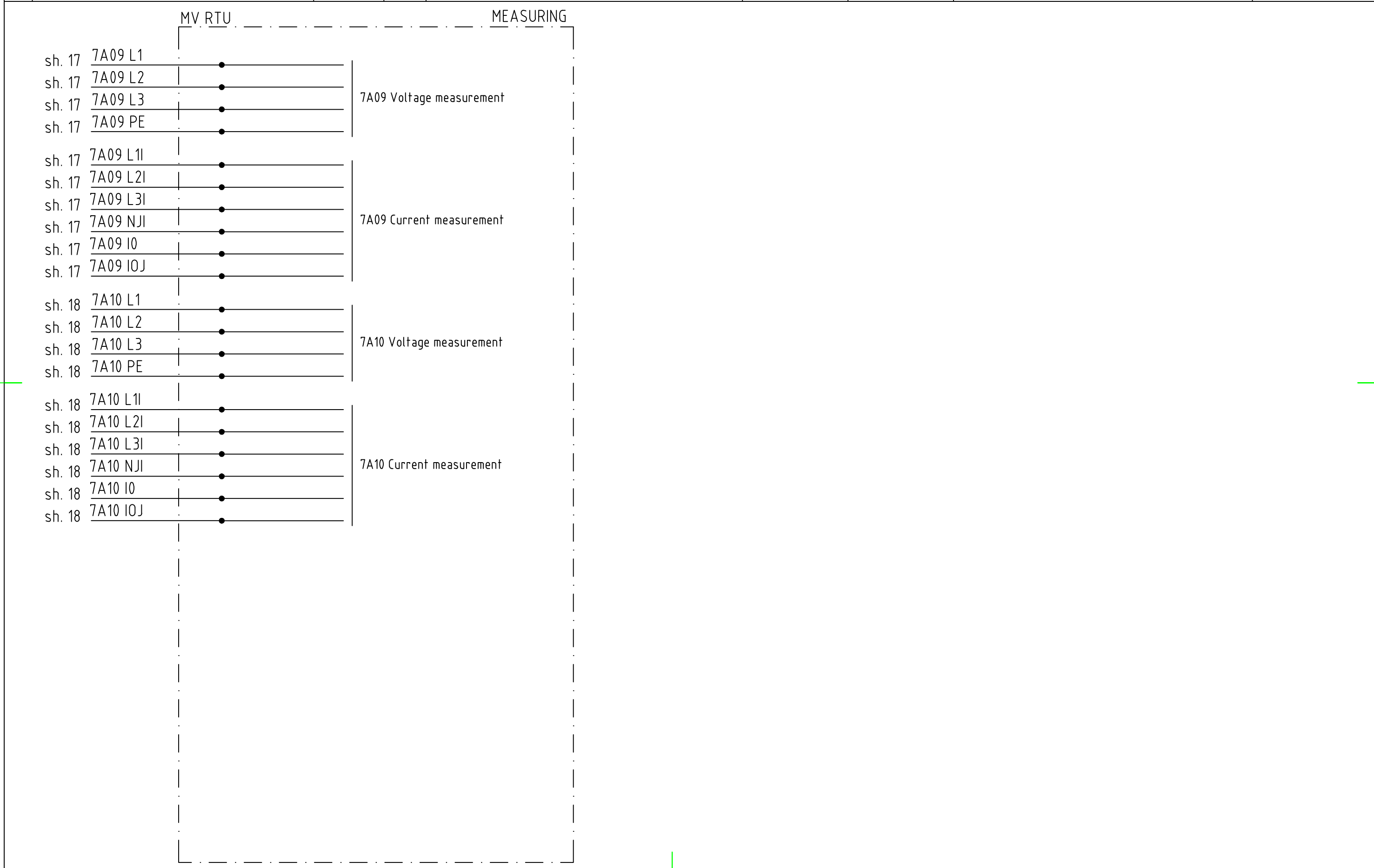
NOT	ÄNDRING	INFÖRD	SIGN

RTU MV Measurements

ELLEVIÖ			
KONSTR.	KJS	RIT.	KJS
KOLL.	HRo	GODK.	
SKALA		DAT.	2023-10-23

SECONDARY SUBSTATION
SWITCHGEAR
Example schematics MV Type 1, LV Type 4-5

Attachment 14	
ERS.	
BLAD	21
FORTS.BLAD	22



NOT	ÄNDRING	INFÖRD	SIGN	RTU MV DI	ELLEVIO	SECONDARY SUBSTATION		Attachment 14
						KONSTR. KJS	RIT. KJS	SWITCHGEAR
					KOLL. HRo	GODK.	Example schematics MV Type 1, LV Type 4-5	BLAD 22
					SKALA	DAT. 2023-10-23		FORTS.BLAD 23

